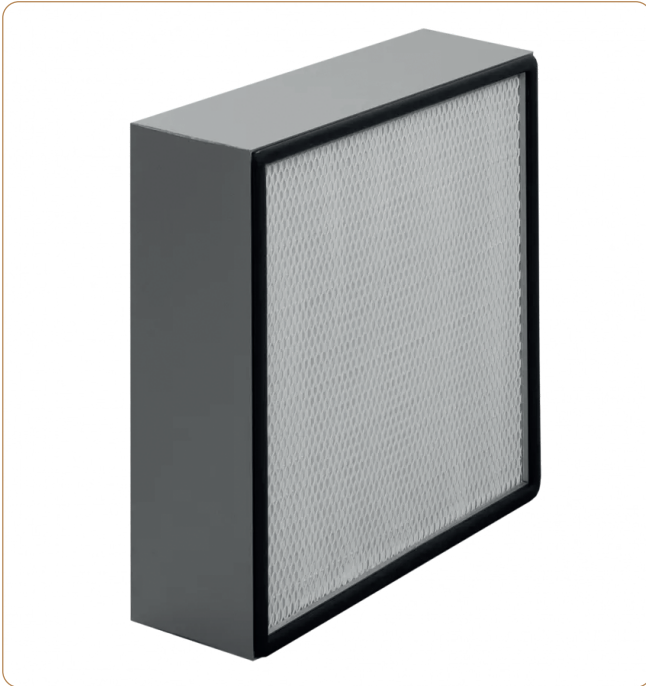


EPA/HEPA filters

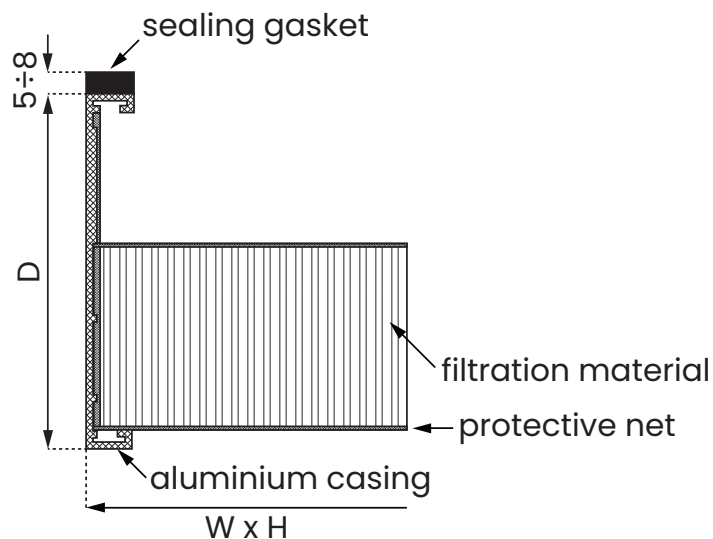
UltraAlu 150



| | |
|--|--|
| PN-EN 1822:2009 Class: | E10, E11, H13, H14 |
| Filtration material: | glass fiber (glass microfibers) |
| Separators: | hot melt |
| Casing: | aluminum with protective nets on both sides |
| Bonding: | two-component, cold-mixed (polyurethane) |
| Sealing gasket: | on one side of the filter (continuous foam or flat) |
| Max. operating temperature: | 80°C |
| Permissible relative humidity: | >100% |
| *Final pressure drop derived from the filter test standard: | 500 Pa |
| Protective net: | optionally on one or both sides |

1. Durable and rigid construction
2. Protective nets for filter cartridges
3. High dust absorbency
4. Low pressure drop
5. Long filter lifespan
6. Low energy costs
7. Resistance to humidity
8. Flame retardant (F1 acc. DIN 53438)
9. Disposal without toxic compounds

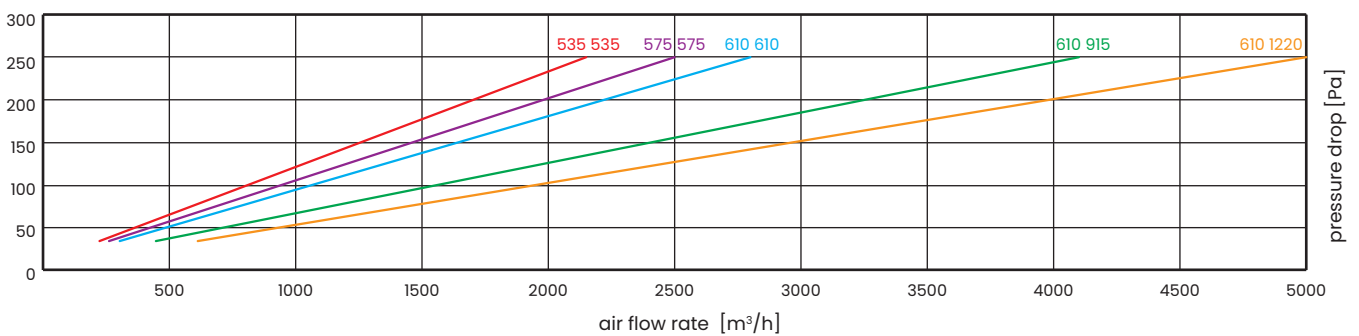
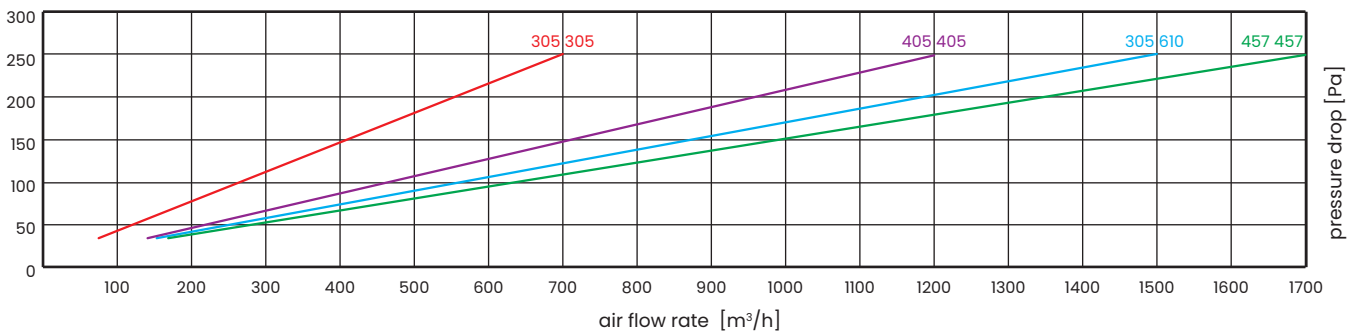
* The final operating pressure drop of the filters should be checked in the technical documentation or consulted with the manufacturer of the equipment being operated.



We reserve the right to make changes to the technical specifications at any time without prior notice, resulting from the continuous improvement of our products. The values shown are approximate and may fluctuate within tolerances. HEPA filters (High Efficiency Particulate Air Filters) undergo complete quality control starting from checking the quality of components to a thorough inspection and control of the finished product.

Technical data for standard filters based on the results of laboratory tests carried out in accordance with EN 1822

| Filtration Class | Product | Dimensions [mm] | | | Filtration Area [m ²] | Air Flow Rate [m ³ /h] | Initial Pressure Drop [Pa] |
|------------------|-------------|-----------------|------|-----|-----------------------------------|-----------------------------------|----------------------------|
| | | W | H | D | | | |
| E10 | UltraAlu150 | 305 | 305 | 150 | 3,4 | 150 | 60 |
| | | 405 | 405 | 150 | 6 | 250 | 60 |
| | | 305 | 610 | 150 | 6,9 | 300 | 60 |
| | | 457 | 457 | 150 | 7,6 | 350 | 60 |
| | | 535 | 535 | 150 | 10,6 | 450 | 60 |
| | | 575 | 575 | 150 | 12,3 | 530 | 60 |
| | | 610 | 610 | 150 | 13,9 | 600 | 60 |
| | | 610 | 915 | 150 | 20,8 | 1000 | 60 |
| | | 610 | 1220 | 150 | 27,8 | 1200 | 60 |



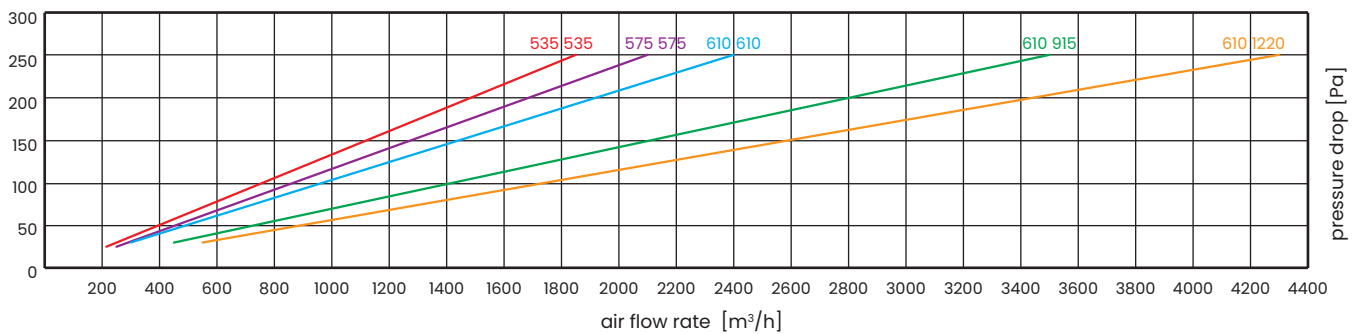
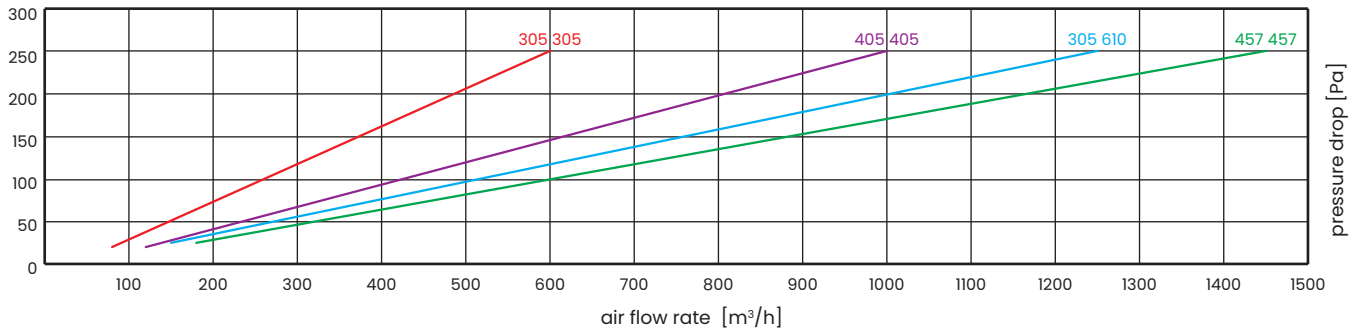
Filters in aluminum casings are manufactured in all sizes, but we recommend that the front area of the filter does not exceed 0.6 m².

We reserve the right to make changes to the technical specifications at any time without prior notice, resulting from the continuous improvement of our products. The values shown are approximate and may fluctuate within tolerances. HEPA filters (High Efficiency Particulate Air Filters) undergo complete quality control starting from checking the quality of components to a thorough inspection and control of the finished product.

Technical data for standard filters based on the results of laboratory tests carried out in accordance with EN 1822

| Filtration Class | Product | Dimensions [mm] | | | Filtration Area [m ²] | Air Flow Rate [m ³ /h] | Initial Pressure Drop [Pa] |
|------------------|-------------|-----------------|------|-----|-----------------------------------|-----------------------------------|----------------------------|
| | | W | H | D | | | |
| E11 | UltraAlu150 | 305 | 305 | 150 | 3,4 | 150 | 70 |
| | | 405 | 405 | 150 | 6 | 250 | 70 |
| | | 305 | 610 | 150 | 6,9 | 300 | 70 |
| | | 457 | 457 | 150 | 7,6 | 350 | 70 |
| | | 535 | 535 | 150 | 10,6 | 450 | 70 |
| | | 575 | 575 | 150 | 12,3 | 530 | 70 |
| | | 610 | 610 | 150 | 13,9 | 600 | 70 |
| | | 610 | 915 | 150 | 20,8 | 1000 | 70 |
| | | 610 | 1220 | 150 | 27,8 | 1200 | 70 |

168

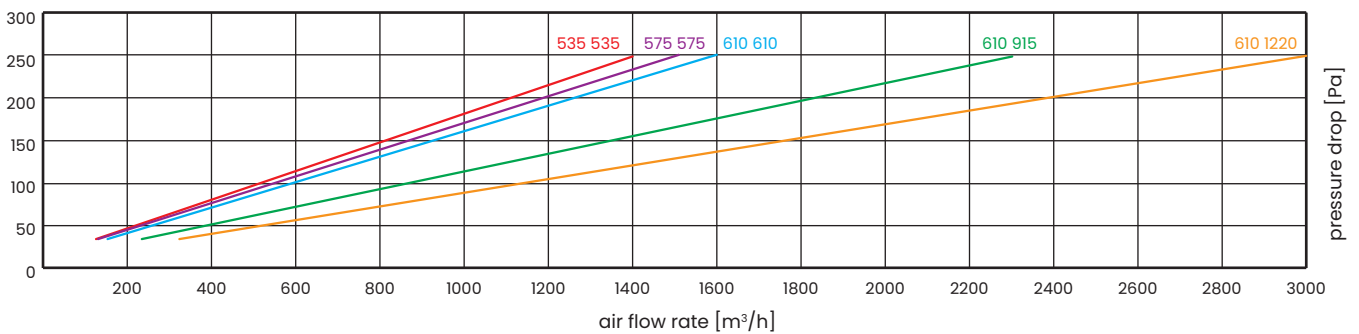
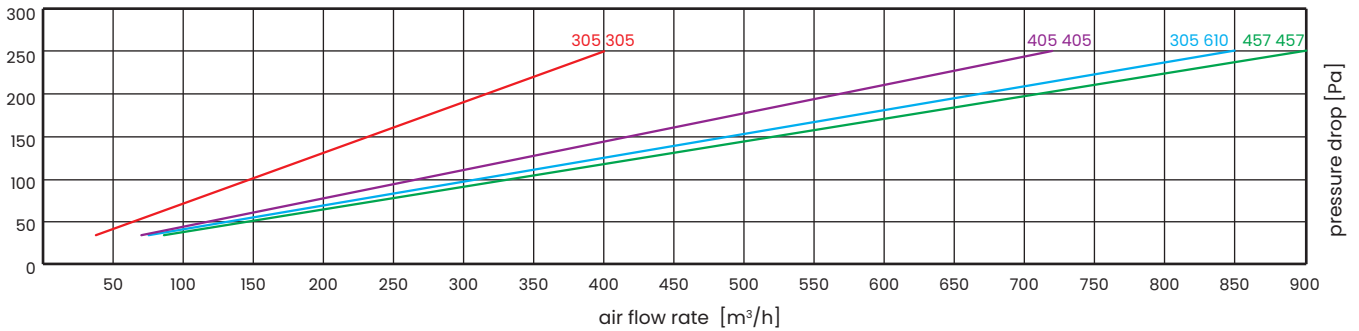


Filters in aluminum casings are manufactured in all sizes, but we recommend that the front area of the filter does not exceed 0.6 m².

We reserve the right to make changes to the technical specifications at any time without prior notice, resulting from the continuous improvement of our products. The values shown are approximate and may fluctuate within tolerances. HEPA filters (High Efficiency Particulate Air Filters) undergo complete quality control starting from checking the quality of components to a thorough inspection and control of the finished product.

Technical data for standard filters based on the results of laboratory tests carried out in accordance with EN 1822

| Filtration Class | Product | Dimensions [mm] | | | Filtration Area [m ²] | Air Flow Rate [m ³ /h] | Initial Pressure Drop [Pa] |
|------------------|-------------|-----------------|------|-----|-----------------------------------|-----------------------------------|----------------------------|
| | | W | H | D | | | |
| H13 | UltraAlu150 | 305 | 305 | 150 | 3,4 | 150 | 100 |
| | | 405 | 405 | 150 | 6 | 250 | 100 |
| | | 305 | 610 | 150 | 6,9 | 300 | 100 |
| | | 457 | 457 | 150 | 7,6 | 350 | 100 |
| | | 535 | 535 | 150 | 10,6 | 450 | 100 |
| | | 575 | 575 | 150 | 12,3 | 530 | 100 |
| | | 610 | 610 | 150 | 13,9 | 600 | 100 |
| | | 610 | 915 | 150 | 20,8 | 1000 | 100 |
| | | 610 | 1220 | 150 | 27,8 | 1200 | 100 |

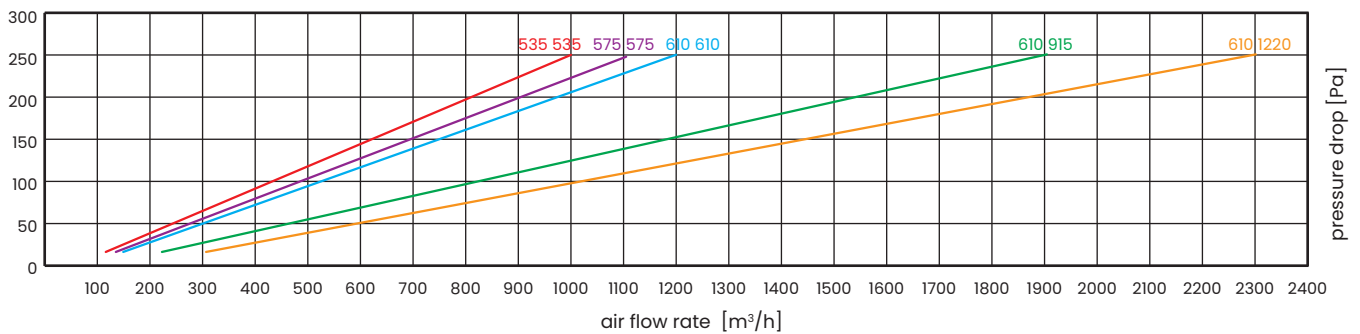
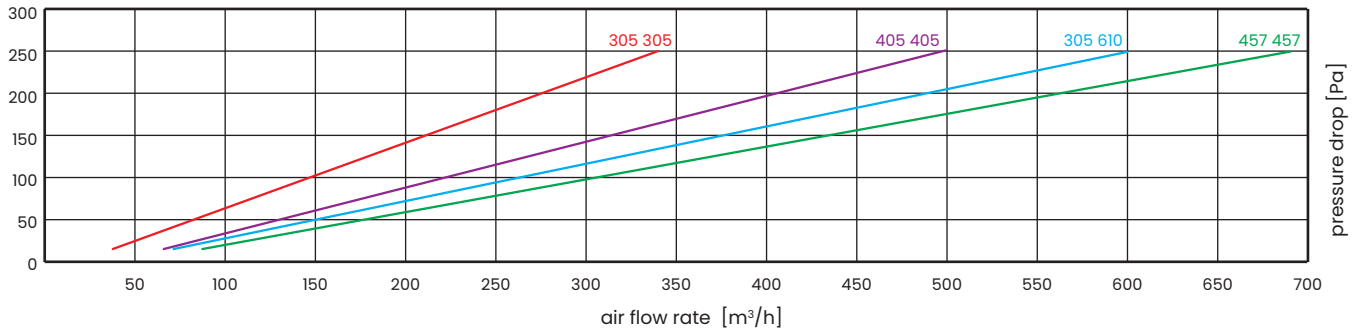


Filters in aluminum casings are manufactured in all sizes, but we recommend that the front area of the filter does not exceed 0.6 m².

We reserve the right to make changes to the technical specifications at any time without prior notice, resulting from the continuous improvement of our products. The values shown are approximate and may fluctuate within tolerances. HEPA filters (High Efficiency Particulate Air Filters) undergo complete quality control starting from checking the quality of components to a thorough inspection and control of the finished product.

Technical data for standard filters based on the results of laboratory tests carried out in accordance with EN 1822

| Filtration Class | Product | Dimensions [mm] | | | Filtration Area [m ²] | Air Flow Rate [m ³ /h] | Initial Pressure Drop [Pa] |
|------------------|-------------|-----------------|------|-----|-----------------------------------|-----------------------------------|----------------------------|
| | | W | H | D | | | |
| H14 | UltraAlu150 | 305 | 305 | 150 | 3,4 | 150 | 115 |
| | | 405 | 405 | 150 | 6 | 250 | 115 |
| | | 305 | 610 | 150 | 6,9 | 300 | 115 |
| | | 457 | 457 | 150 | 7,6 | 350 | 115 |
| | | 535 | 535 | 150 | 10,6 | 450 | 115 |
| | | 575 | 575 | 150 | 12,3 | 530 | 115 |
| | | 610 | 610 | 150 | 13,9 | 600 | 115 |
| | | 610 | 915 | 150 | 20,8 | 1000 | 115 |
| | | 610 | 1220 | 150 | 27,8 | 1200 | 115 |



Filters in aluminum casings are manufactured in all sizes, but we recommend that the front area of the filter does not exceed 0.6 m².

We reserve the right to make changes to the technical specifications at any time without prior notice, resulting from the continuous improvement of our products. The values shown are approximate and may fluctuate within tolerances. HEPA filters (High Efficiency Particulate Air Filters) undergo complete quality control starting from checking the quality of components to a thorough inspection and control of the finished product.